

SPECTRAPLAN RAINWATER OUTLETS

PRODUCT INFORMATION

Spectraplan rainwater outlets are pre-formed vertical drop and parapet outlets manufactured from injection moulded PE and are available in a wide range of diameters. Spectraplan rainwater outlets provide a secure hot air welded solution to roof top drainage when used in conjunction with Spectraplan membranes.

Material	TPE
Colour	Light Grey

VERTICAL DROP OUTLET DIMENSIONS

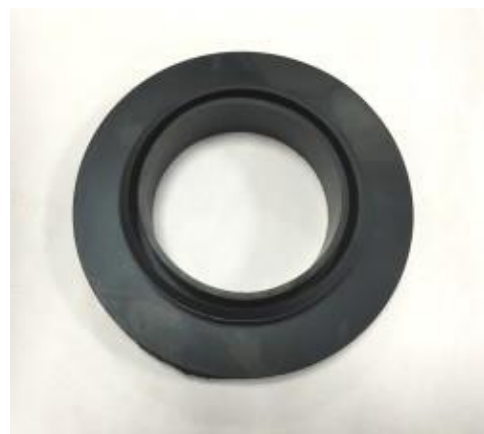
Description	External Diameter	Base Plate Diameter	Spigot Length
TPE Non-Angled Roof Drain 63mm	57mm	300mm	320mm
TPE Non-Angled Roof Drain 75mm	69mm	300mm	320mm
TPE Non-Angled Roof Drain 90mm	84mm	390mm	320mm
TPE Non-Angled Roof Drain 95mm	89mm	390mm	320mm
TPE Non-Angled Roof Drain 110mm	104mm	390mm	320mm
TPE Non-Angled Roof Drain 125mm	119mm	390mm	320mm
TPE Non-Angled Roof Drain 140mm	134mm	390mm	320mm
TPE Non-Angled Roof Drain 63mm	57mm	300mm	320mm
TPE Non-Angled Roof Drain 75mm	69mm	300mm	320mm
TPE Non-Angled Roof Drain 90mm	84mm	390mm	320mm

FEATURES & BENEFITS

- Good UV resistance and durability
- Excellent mechanical properties and product performance
- Efficient and safe installation
- Secure hot air welded interface



Item Description	Pipe Dia (mm)
D95 Seal Large	110-130
D95 Seal Small	100-110



PARAPET OUTLET DIMENSIONS

Description	Internal Diameter	90° Angled Base Plate	Spigot Length
TPE 90° Angled Drain 63mm	57mm	H 180mm x Base 100mm x W 280mm	480mm
TPE 90° Angled Drain 75mm	69mm	H 180mm x Base 100mm x W 280mm	480mm
TPE 90° Angled Drain 90mm	84mm	H 180mm x Base 100mm x W 280mm	480mm

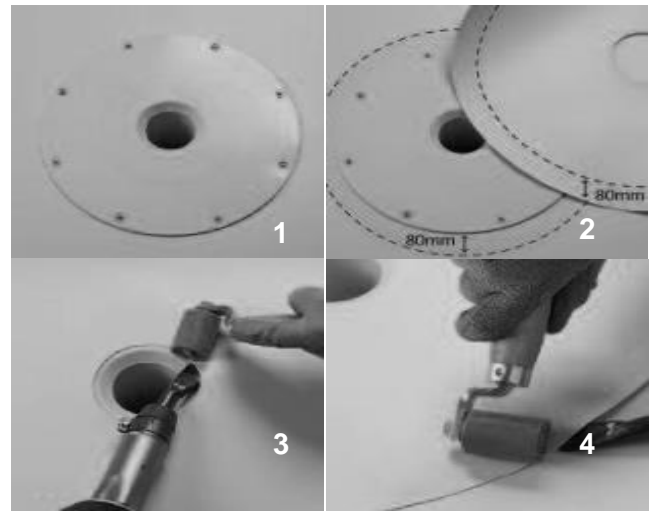
VERTICAL DROP TPE RAINWATER OUTLET INSTALLATION

The outlet units should preferably be rebated into the substrate

Mechanically fixed systems require additional fasteners beneath the outlet position or around the completed outlet and weathered separately.

Connect and seal the Spectraplan outlet and mechanically fix to the substrate.

Cut a circular membrane apron flashing of Spectraplan D membrane and hot air weld to the outlet and the membrane.



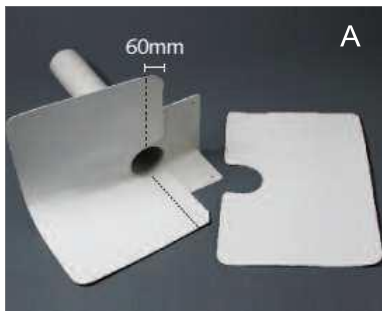
TPE PARAPET OUTLET INSTALLATION

OPTION A

Fix outlet to the substrate using suitable IKOfix fasteners

2 matching flashings of Spectraplan D membrane should be cut as illustrated

Hot air weld each section of flashing to the outlet flange
Hot air weld the outer edge to the field sheet and upstand membrane



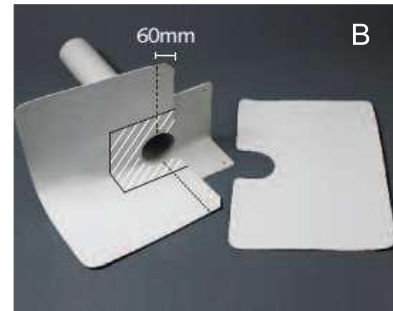
OPTION B

2 matching flashings of Spectraplan D membrane should be cut as illustrated

Hot Air weld the 2 flashings to the outlet flange remembering to leave the fixing points free from weld

Fix the outlet to the substrate using suitable IKOfix fasteners

Hot air weld the outer edge to the field sheet and upstand membrane



FURTHER PRODUCT INFORMATION

Full product literature, health & safety and technical sheets are available as downloads from our website

www.ikopolymeric.com or on request by email polymeric.marketing@iko.com.