

SPECTRAPLAN STANDING SEAM PROFILE

PRODUCT INFORMATION

Spectraplan TPE Standing Seam Profile is a preformed profile used to simulate a metal standing seam joint. The profile is manufactured from TPE and is hot air welded to the installed Spectraplan Membrane at a layout specified by the client.

Material	TPE
Length	2000mm
Height	30mm
Width	41mm
Colour	Light Grey
Product Number	44441009

FEATURES & BENEFITS

- Cost effective standing seam imitation
- Quick and easy installation
- Attractive roof finish



INSTALLATION

Mark out the position of the standing seam profiles across the completed roof area and pull a string/chalk line to achieve a straight edge.

Tack welds the standing seam profile on to the completed roof to hold into position.

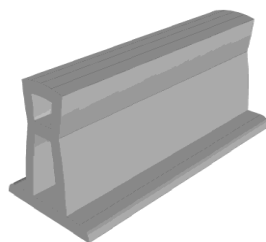
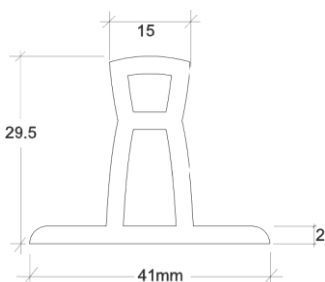
Option 1 – Fully hot air weld each flange of the profile to the roof surface

Option 2 – Tack weld the profile to the roof at 200mm centres along each edge of the profile flange. The tack welds should be staggered.

Allow a 2mm gap between the end of each profile for expansion / drainage.

Option - At the end of the line of profiles install a small section of Spectraplan membrane over the end of the profile by hot air welding to the cut end.

TECHNICAL SPECIFICATION



STORAGE

Spectraplan Standing Seam Profiles should be kept dry. They should be stored raised off the surface of the roof and covered with a suitable waterproof layer.

FURTHER PRODUCT INFORMATION

Full product literature, health & safety and technical sheets are available as downloads from our website www.ikopolymeric.com or on request by email polymeric.marketing@iko.com.