

ARMOURPLAN WALKWAY

PRODUCT INFORMATION

Provides a slip resistant surface and additional protection to the waterproof membrane in areas where mechanical damage is more likely to occur

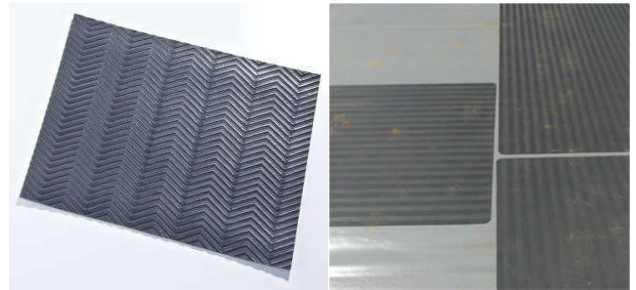
Hot air welded to the roof surface in a layout as specified by the client

Can be installed over either mechanically fastened or adhered Armourplan roofing systems.

FEATURES & BENEFITS

- Herringbone Patterned
- Contrasting colour for demarcation
- Excellent UV resistance and durability
- Excellent mechanical properties and product performance
- Efficient and safe installation
- Secure seam welding quality

Description	ARMOURPLAN Walkway
Thickness	2.0mm
Width	1.0m
Length	20m
Colour	Anthracite (nearest RAL 7016) Mid grey (nearest RAL 7046)
Material	PVC-P
Reinforcement	N/A
Product Code	WPDG1000



ARMOURPLAN WALKWAY INSTALLATION

Before installing the walkway membrane on to the completed roof area thoroughly check the installed Armourplan membrane for any weak welds, mechanical damage and ensure the area is clean dry and free from any debris or contamination.

If the walkway is to be heavily trafficked or Rockwool thermal insulation board has been used a 0.9mm galvanized steel spreader sheet should be installed either beneath the waterproofing membrane or beneath the walkway membrane. The spreader sheet should be wrapped in IKOtex fleece and each corner fixed to the substrate using suitable IKOfix fasteners.

Unroll the Walkway Membrane, cut to length if necessary and neatly round off any corners.

Hot air weld the Armourplan Walkway membrane to the Armourplan membrane beneath carrying out any seam preparation in accordance with the IKO Polymeric Armourplan installation handbook.

Once the welds have cooled check the weld integrity by using a seam probe or 4mm wide screwdriver (with rounded edges) along the seam applying pressure into the seam. Repair any defects as necessary.

Repeat the process leaving a 25mm gap between each roll end. Do not overlap the Armourplan Walkway membrane as the chevron pattern may prevent a fully sealed weld being achieved.

TYPICAL PROPERTIES

Characteristic properties	Unit	Method	IKO Armourplan Walkway
Thickness +10%/- 5%	mm	EN 1849-2	2.0
Length +1%/- 0.5%	m	EN 1848-2	20.00
Width +1%/- 0.5%	m	EN 1848-2	1.00
Weight +10%/- 5%	g/m ²	EN 1849-2	2400
Slip Resistance (Potential for slip)		BS7976-2	Low
Minimum Overlap	mm		N/A
Minimum welding width (Automatic)	mm		>30
Minimum welding width (Hand Welder)	mm		>60
Welding temperature	°C		385 – 450
Recommended welding speed (Automatic Welder)	m/min		1.8

FURTHER PRODUCT INFORMATION

Full product literature, health & safety and technical sheets are available as downloads from our website www.ikopolymeric.com or on request by email polymeric.marketing@iko.com.